



法務省告示日本語教育機関

東京千代田日本語学校

Tokyo Chiyoda Japanese Language School



TCK

Tokyo Chiyoda Japanese Language School

English Version





School Introduction

Our school is a Japanese language school established in April 2018 with a strong sense of “Rising People” under the main company “Chiyoda Energy Co., Ltd.,” which was founded in 1941. (Abbreviation: TCK)

As internationalization progresses, our school understands and respects each individual’s individuality based on the idea of “rising people who can live stronger with their own personality in a global society,” and through the process of teaching Japanese, we try to extend it. In addition, with mutual understanding, we strive to promote international exchange and contribute to the goodwill and development of the international community in the future.

In order to improve your Japanese ability, you need to feel fun and should have interest. Therefore, we are running lessons in such a way so that you can feel the joy of learning with everyone and the joy of using Japanese language, by which you can not only enjoy it, but also feel that you have improved, grow, and achieve it. Teachers are also learning every day and challenging new teaching methods and teaching contents so that they can teach more usable things in a better way than old traditional way.

Our Japanese language education aims to acquire practical language skills from basic to advance and at the same time teach about understanding Japanese culture and Japanese society which is very supportive for those who wants to go Japanese universities, graduate schools, vocational schools, and company. In particular, depending on the variety of purposes of studying, such as going on to higher education, finding employment, specific skills employment, our school provides step-by-step support with a flexible curriculum structure and admission guidance classes.

In addition, there are many annual events, including many extracurricular lessons such as excursions, disaster prevention experiences, cultural experiences, National Diet Building visit, and speech contests.



Message from the CEO



Chiyoda Energy Co., Ltd.
Toru Tayama (CEO)

Chiyoda Energy Co., Ltd. was established in 1941, and since the beginning it has been operating mainly on gasoline sales. During that time, we have grown significantly by riding the wave of global motorization and also expanded into other fields such as the real estate leasing business.

The world is standing in an unprecedented turbulence. Including the energy and telecommunications industries, change is required in every industry. We are entering in an era where change and growth are required at an unprecedented speed. So, the development of human resources who should be the standard-bearers of that era is the way we should take on new challenges in the future. We established Tokyo Chiyoda Japanese Language School for various abilities, strong mental power and manners based on Japanese language education. We would like to devote ourselves to developing world-class human resources who have cross-border kindness and strength. I am waiting for a young challenger who agrees with such thought to be admitted from the bottom of my heart.

Message from Principal



*Tokyo Chiyoda Japanese
Language School*
Hideki Fujikura (Principal)

For those wishing to study abroad, our school is located in central Chiyoda-Ku, Tokyo. Many international students from this school are studying very hard every day for going to universities and vocational schools, for employment and for Specific Skills Work. We support and give proper guidance to each international student so that he or she can choose the desired course.

In addition, not only acquisition of Japanese language, but also our teaching staff is working hard with the hope to deepen student's interest in Japan through interacting with many Japanese people, Cultural exchange and make them feel like they are in their second home.

I have one request for everyone. While studying at our school, I want you to have a goal first and then spend with the concentration you have never experienced before and the greed to absorb everything. The longest period of study is only 2 years. This is not just a fun place, probably also a turning point for you depending on how hard you can study here. You can decide whether you want to study at a higher school or find a job.

Please do your best and I'm looking forward to meet you. Let's take a new step together to fulfill a big dream.

Educational Principle

Raise people who can live stronger with their own personality in a global society.

Educational policy

- ① To raise your own personality
- ② Acquisition of high Japanese proficiency
- ③ Support for independence
- ④ To raise flexible mind that can respond to a multicultural society
- ⑤ Provide appropriate career guidance

The curriculum of Tokyo Chiyoda Japanese Language School consists of the most appropriate programs for learning Japanese and going on to higher education in order to realize the dreams of each student. From admission to graduation, teachers and staff will provide full support.

Admission qualification

- ① Those who have received compulsory education for 12 years or more in their own country or abroad, and those who have equivalent academic ability.
- ② Those who are 18 years or older and have clear goals for study and are motivated to go on to higher education.
- ③ Those who are capable of paying expenses during the period of studying in Japan.
- ④ Those who have graduated from school more than 5 years before (explanation is required if there are special circumstances).
- ⑤ Those who have a reliable expense supporter and guarantor.
- ⑥ Those who have studied Japanese for 150 hours or more or have passed the Japanese Language Proficiency Test N5 (other tests equivalent to the Japanese Language Proficiency Test N5 are also accepted).



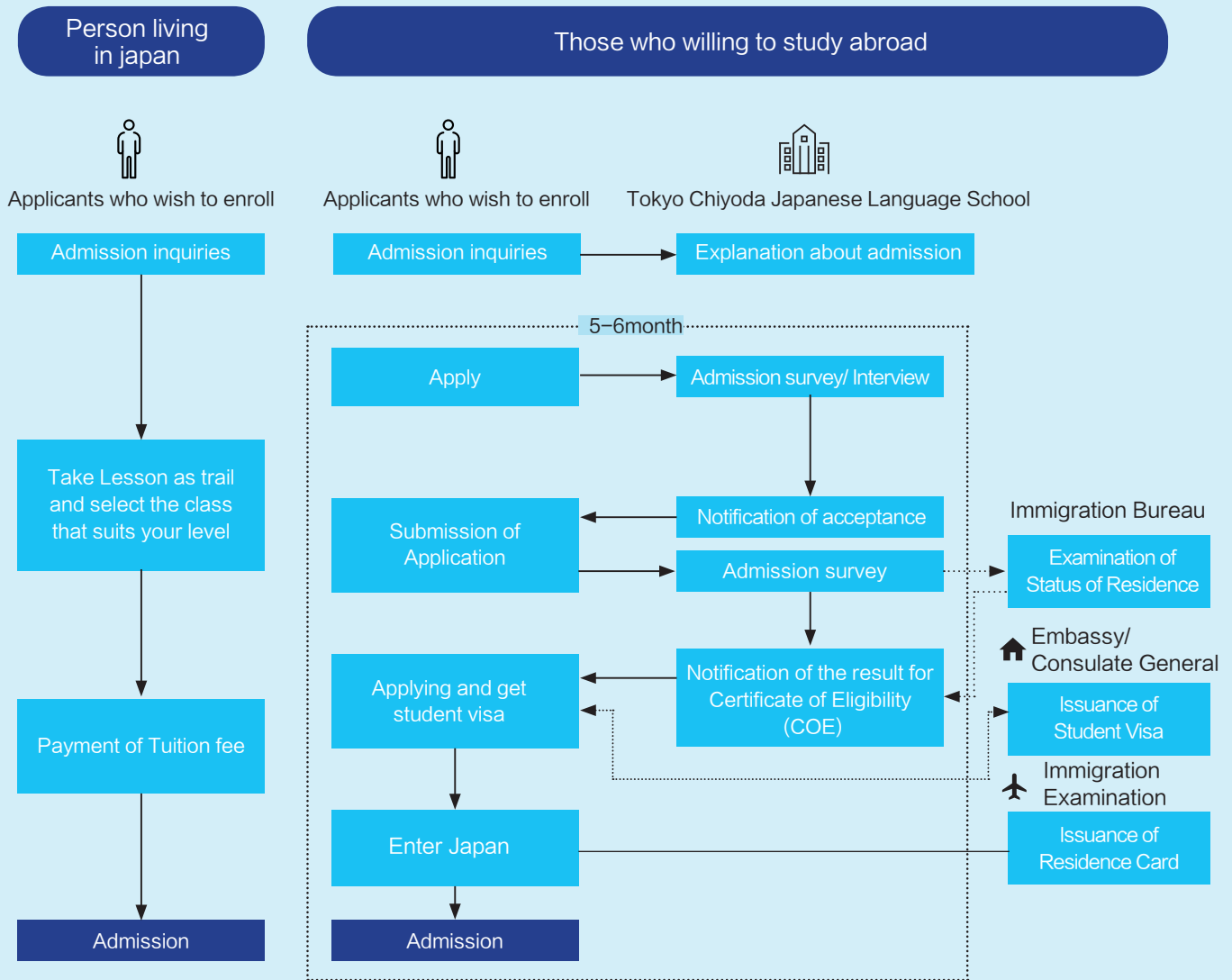
🔄 Application period

Admission time	Application period	Result time
April	From June to the end of October of the previous year	End of February
July	October of the previous year ~ End of February	End of May
October	December of the previous year ~ End of April	End of August
January	May of the previous year ~ End of August	End of November

* You can apply for a short course at any time.



Admission flow



Student visa

A student visa is required for students studying at a Japanese language school, Japanese university, or a vocational school.

The period of stay for a student visa may be up to 2 years if renewed.

To obtain a student visa, you must submit a "Certificate of Eligibility" to the Immigration Bureau.

In order to apply for a "Certificate of Eligibility", the applicant submits the necessary documents to the Immigration Bureau through the school.

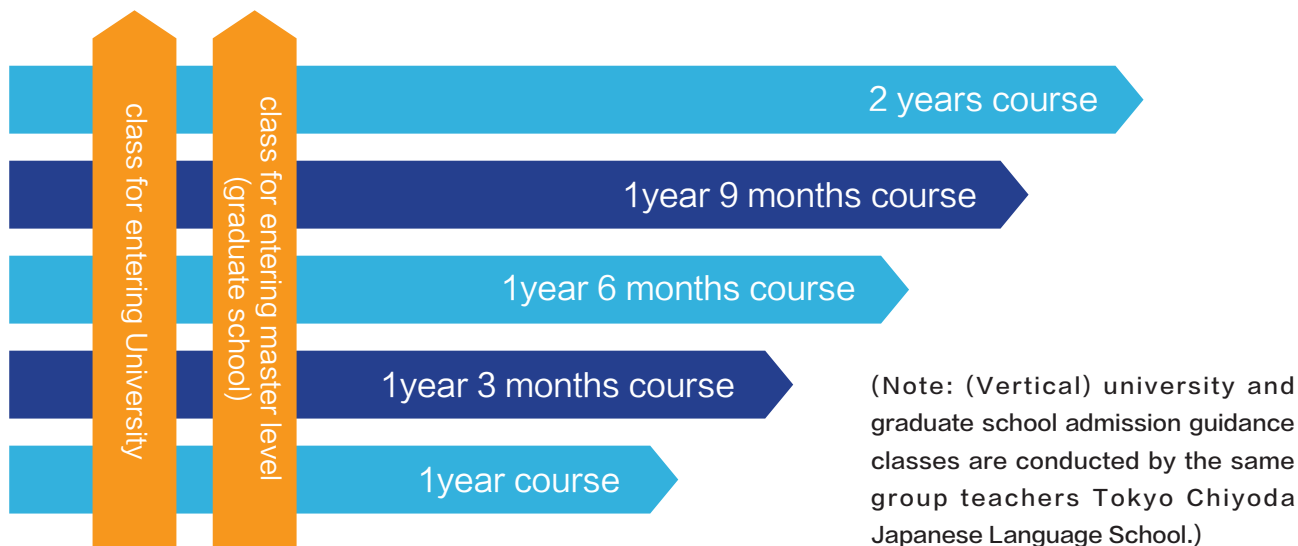
Please contact our school or an intermediary for the specific application method.





Curriculum Scheme

Tokyo Chiyoda Japanese Language School (TCK) has set up a curriculum that suits each student's individuality, according to the student's Japanese level, learning goals, and future career aspirations in Japan (horizontal + vertical method). Among them, "horizontal" is a compulsory Japanese language course, and "vertical" is option course for students who can take it according to their wishes to go for the universities.



Horizontal: Japanese course

	April	July	October	January	April	July	October	January
Beginner -Advanced 2 year course	Equivalent N5 ~ N4		N4 ~ N3		N3 ~ N2		N2 ~ N1	
	Beginner I · II		Intermediate		Semi Advance		Advance	
Beginner -Advanced 1 year 9 months course		N5 ~ N4	N4 ~ N3		N3 ~ N2		N2 ~ N1	
		Beginner I · II	Intermediate		Semi Advance		Advance	
Beginner- Intermediate 1 year 6 months course			N5 ~ N4		N4		N3 ~ N2	
			Beginner I · II		Intermediate		Semi Advance	
Semi Intermediate -advanced 1 year 3 months course			N4 ~ N3		N3 ~ N2		N2 ~ N1	
			Intermediate		Semi Advance		Advance	
Intermediate- Advanced 1 year course					N3 ~ N2		N2 ~ N1	
					Semi Advance		Advance	

Note 1: For beginner students or non-Kanji-speaking students, we recommend a 2-year course, a 1-year 9-month course, and a 1-year 6-month course.

Note 2: We also recommend that you to take the guidance for going on to higher education from the school.

Vertical: Course for entering high school (University/ Master)

Preparatory University course		
Course content	Classes for the Examination for Japanese University (EJU) Admission for International Students are also part of the course, and we also offer individual consultations according to the individuality and needs of the students.	
Classification	A class (Difficult school measures class)	With the goal of getting 330 points or more we will prepare for attending EJU test, essays, and practice past problems held by the university.
	B class (General university preparation class)	With the goal of getting 260 points or more we will prepare for attending EJU test, essays, and practice past problems held by the university.

※It is necessary to make an appointment with the teacher in charge in advance to confirm and correct the documents related to the application for admission.

Course for entering Master level		
Course content	Depending on the student's wishes, classes in pedagogy, media studies, literature, business administration, economics, etc. are provided in the liberal arts. In science, classes such as landscaping, industrial design, architecture, materials, electrical engineering, agriculture, biology, and informatics are provided. We also offer classes and guidance on art and music. In addition to special lessons, the lessons include literature searches, research plans, dissertation writing, interview practice, presentation practice, and individual consultation. After practicing and explaining the past questions of each university, we explain the entrance examination measures in detail.	
Classification	A class (difficult university preparation class)	Aim for National universities such as the University of Tokyo, Tokyo Institute of Technology, Hitotsubashi University, Yokohama National University, University of Tsukuba, Keio University, Waseda University, Sophia University, Rikkyo University, Hosei University, and Chuo University.
	B class (General university preparation class)	Aim for university such as Nihon University, Toyo University, Takushoku University, Reitaku University, Musashino University, Senshu University, Kokushikan University, and Rissho University.

※Depending on your major, one-on-one VIP classes are also possible, but please contact us for details.

※Please contact us in advance if you would like to apply for a research student or go on to graduate school from a university student of China.

Tuition Fee

Long Course (Including 10% consumption tax)

Course	Admission time	Enrollment fee	Tuition fee	materials fee, others	Total
1 year	April	¥55,000	¥654,000	¥66,000	¥775,000
1 year & 3 months	January		¥817,500	¥82,500	¥955,000
1 year & 6 months	October		¥981,000	¥99,000	¥1,135,000
1 year & 9 months	July		¥1,144,500	¥115,500	¥1,315,000
2 years	April		¥1,308,000	¥132,000	¥1,495,000

- A separate selection fee of 22,000 yen is required when applying. (No refund)
- Expenses (Facility fee, Extracurricular activities expenses, Medical checkup, Foreign student insurance, etc.)
- For handing over the Certificate of Eligibility, please pay the total fee (785,000 yen) of the first year.

Short course (Including 10% consumption tax)

Course	Admission	Tuition Fee	materials fee, others	Total
1 month	Timely	¥60,000	¥6,000	¥66,000
2 months		¥120,000	¥12,000	¥132,000
3 months		¥180,000	¥18,000	¥198,000

- Those who have a valid visa other than the student visa can study.

Full scholarship system

Japan–China Friendship Scholarship, Art Award, Principal Award, Perfect Attendance Award, Qualification Examination Award (Students who passed the difficult school, N1 passers, EJU grades of 300 points or more) A full range of scholarships are available.



(Note: When you receive the Certificate of Eligibility and perform the specific admission procedure, you can consult with the instructor about the choice of dormitory.)

Student dormitory and costs

Share House

Share House designed for students by a Japanese real estate company. You can choose a comfortable room that suits you according to your needs.

One Room

Located in Akihabara, Ikebukuro, etc. near the school, you can choose a satisfying room according to your budget.

Boy's dormitory

An international student dormitory provided by a public interest incorporated foundation.

(The dormitory fee is 35,000 yen every month, and it is only for boys.)

Girl's dormitory

The interior of the women's dormitory is well-equipped and there is no problem of safety. The dormitory fee is 55,000 yen every month)

Annual event table

Class time: Monday–Friday 4 Periods per day (Closed on Saturday, Sunday and public holidays)

	Morning Class (2 nd Grade)	Afternoon Class (1 st Grade)
1 st Period	9:30 ~ 10:15	13:20 ~ 14:05
2 nd Period	10:20 ~ 11:05	14:10 ~ 14:55
3 rd Period	11:15 ~ 12:00	15:05 ~ 15:50
4 th Period	12:05 ~ 12:50	15:05 ~ 16:40

Long vacation: Spring vacation, summer vacation, autumn vacation, winter vacation, Golden Week (GW)



Annual schedule

- April** April student entrance ceremony / Visiting Kanda Myojin and Yushima Shrine (new students)
- May** GW (About 1 Week) / Medical checkup/ Disaster prevention experience
- June** Participation in the Higher Study Entrance fair / Examination for Japanese University Admission for International Students (EJU)
- July** July student entrance ceremony /Japanese Language Proficiency Test (JLPT) / Tanabata party
- August** Summer vacation (about 2 weeks)/ Cultural experience (dressing, etc.)
- September** Speech competition / Autumn vacation (about 1 week)
- October** October student entrance ceremony /Participation in the information session for going on to higher education (1st and 2nd grade) / Cultural experience (dressing, etc.)
- November** Examination for Japanese University Admission for International Students (EJU) / Medical checkup
- December** Japanese Language Proficiency Test (JLPT) / Excursion (Fuji-Q Highland, Disneyland, etc.) / Christmas party / Winter vacation (about 2 weeks)
- January** January student entrance ceremony / First shrine visit (January)
- February** National Diet Building visit / Bean throwing festival
- March** Speech competition / Graduation trip (interested only) / Graduation ceremony / Spring break (about 2 weeks)



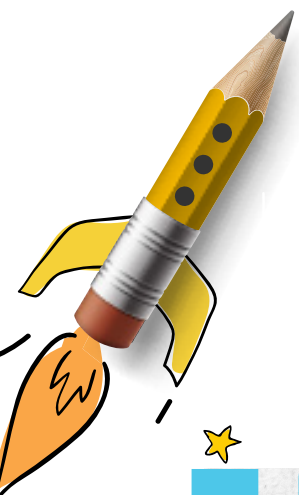
There are also other activities such as "Let's learn calligraphy from the principal" and tours of the Medical Museum, the Imperial Palace, and the Bank of Japan. In addition, various sessions for going to higher education, classes and information sessions for student who wants to go vocational schools and universities will also be done. 2nd year students can take classes in the morning and can receive one-on-one instruction in the afternoon.

Support system

- Procedure support (resident registration, health insurance, bank account / buy mobile phone)
- Airport pick-up (Narita Airport / Haneda Airport)
- Part-time job support (introduction of part-time job, guidance of interview, securing of student rights)
- Stress support (psychological counseling, regular student life survey, regular contact with student parents)
- Medical support (hospital referral, hospital attendant, infirmary, regular medicine)
- International Student Insurance (Our school fees include international student insurance, and students can receive appropriate compensation if something goes wrong, so please contact the school specifically.)



Teachers Introduction



Mrs. Ishikura
(Teacher)

Welcome to everyone who to Tokyo Chiyoda Japanese Language School (TCK). Our teachers welcome you to study at our school located at the capital of Japan, the center of Tokyo. We will provide detailed guidance according to your Japanese level. Also, while graduating from our school, you will be provided with guidance to go to a vocational school or university. Though difficult to work part-time at the time of studying at school for a year or two years, I will also provide support for your daily life. Let's study hard together with us, find a difficult and enjoyable study abroad life, and walk with us!

Our faculty and staff are experienced and value their students very much. I will do my best to support you to live a fulfilling study abroad life where you can grow not only in Japanese but also in humans! Let's work hard together!



Voice of current students

The teachers of this school will always support you in any problem.

When I went to the hospital, teacher was with me by which I felt very comfort.



At the time of Corona, School provides online class so I was able to continue my study.



Feedback from graduates



I came to Japan on April 9, 2018 and enrolled in Tokyo Chiyoda Japanese Language School. At that time, I didn't understand

anything and had a hard time in my life, but at school, I was taught not only Japanese language but also Japanese culture, rules and manners. The school is located on the 8th and 9th floors of the building, and it was a nice environment where the air was fresh and cool while watching the street views. Thanks to the teachers that I passed the N1 Japanese Language proficiency test. I have even passed specific hotel skills test. So I am very happy that after graduation from school, I get a good job. Thank you very much.

DAO TUAN VU (VIETNAM)





**Mrs. Kazuno
(Teacher)**

I myself have also continued to study while working both abroad and in Japan, so I can see how difficult it is to achieve both at the same time. I try to take advantage of that experience and give guidance from the perspective of students. Rather than asking students to study unilaterally, I think it is important to show teacher how to learn independently.

We hold teacher study sessions in the school, participate in external research meetings and related academic societies, and do our best to reflect them in the lessons. You are not the only one to learn. Let's work hard together!

It may be difficult to adapt to a new environment, different cultures and customs when studying in Japan for the beginning. So study Japanese language hard for your future. In addition, part-time work and self-management of money and schedule are important for self-reliance. The Tokyo Chiyoda Japanese Language School will support all faculty members in terms of learning and life so that you can live a study abroad life with peace of mind.



**Mr. Hagiwara
(Executive Director)**



**Mr. Mohan
(Office Staff)**

I used to be an international student who knew nothing. I understand the difficulties and loneliness of international students, so I will support you with your feelings. If you have any problems, please feel free to contact us (we also support dormitories, procedures, cell phones, etc.). There is no elevator for success, so you have to climb stairs. Tokyo Chiyoda Japanese School helps you reach your goals. Have a great time at Tokyo Chiyoda Japanese School.



The teachers of Tokyo Chiyoda Japanese School are all very kind. When I had any problems, immediately I used to tell them, so I have received various support so far. With such support, I was able to overcome my problems and live a good student life. Also, all teachers are like friends. I enjoyed traveling and dining together. I am very grateful for such support.

SHRESTHA BRINDA (NEPAL)

I still remember the kindness of the TCK teacher. They carefully revised the research plan until late at night, listened to my worries, consulted with me about going on to higher education, and comforted and encouraged me at the time of sorrow. All you have to do is try it. Thanks to that, I was able to pass the school of my first choice. I'm really lucky and happy to meet the teachers and become a student.

**Entered Ochanomizu Joshi University
Lin (CHINA)**

It is often said that studying abroad is always accompanied by loneliness. Live alone, learn alone, get lost alone. There was a period of stress during my abroad study life. It was the TCK teacher who helped me at that time. They looked at the research plan many times and encouraged me with warm words when I was depressed. Thanks to that, I was able to pass the University of my Choice. Even after graduating, I still remember the teacher's teachings.

Entered the University of Tokyo Zhang (CHINA)

After enrolling in TCK, I found that the teachers were not only kind, but also very helpful in learning the language and Japanese culture. The teachers have always helped me solve any problems. Passing the specific skill (long-term care) test to work in Japan has become possible with the continuous support of the teachers. The two years of study was very quick. It was a great encounter with very supportive teachers. It was the correct decision to choose TCK to learn Japanese. I am always grateful and miss my teacher and TCK.

MAHAT SITA (NEPAL)



When I came to Japan, I couldn't speak Japanese, so life was tough. Teachers are very kind and explained clearly about the problems that I didn't understand. There were students from other countries at the school, so I got chance to know not only about Japan but also various friends from different country and their cultures.

There are many practices classes so that it would be easy to enter university, and they will teach you the tips for passing the EJU and the Japanese Language Proficiency Test. They teach from the necessary basic skills so that it will be easy to live and work in Japan.

KHAKIMOV SHAKHZODJON (UZBEKISTAN)



School location and surrounding environment



Our school is a 4-minute walk from Kanda Station in Chiyoda-ku, Tokyo, and is surrounded by central ministries such as the Imperial Palace and the National Diet Building. It is a 10-minute walk from Tokyo Station, the largest station in Tokyo, or Akihabara, the largest game and consumer electronics district. In addition, there is Kanda Jimbocho which is famous for second-hand bookstore town where students can enjoy searching for books that suit their hobbies and interests. In addition, Kanda is close to Tokyo's popular shopping and fashion districts such as Shinjuku, Shibuya, Roppongi, Ginza, and Ikebukuro, and there are many prestigious schools. It's the best location.







法務省告示日本語教育機関

東京千代田日本語学校

Tokyo Chiyoda Japanese Language School

Address : 8F Santo Building, 13 Kanda-Konyacho,
Chiyoda-ku, Tokyo 101-0035 Japan

TEL 03-5295-7515 FAX 03-5295-7570

Home Page: <http://www.tokyo-cjls.com>

Surrounding stations: Kanda Station, Shin-Nihombashi Station,
Iwamotocho Station, Kodemmachi Station, Akihabara Station